

5.2 Choice of location

Do not install your device on the pool edge before having determined the location that will ensure optimal monitoring of your swimming pool.

After having determined the appropriate location, you must ensure that the siren can be heard from your home.

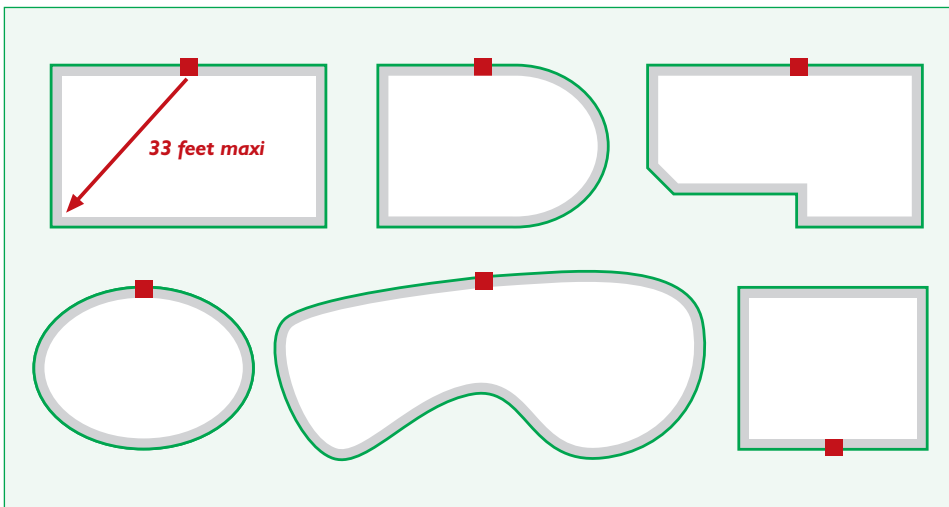
Sensor Espio™ must be positioned in the center of the long side (position recommended for rectangular swimming pools) and against a flat wall in your pool. If your pool does not correspond to the configurations shown below, **ask your retailer for advice.**

Check that there is easy and practical access to the activation zone (where you place the magnet).

Ensure that the central unit is more than one meter away from the filtration system (return fittings, waste plug, skimmer, vacuum fittings, etc.) or waterfall or any other device that may disturb the pool at this place.

⚠ Your fall detector can be used on pools with maximum dimensions of 20 x 50 feet, and must not be more than 33 feet away from all possible fall locations.

In the case of a larger swimming pool, or one that is of a particular shape, ask your retailer for advice.



2) Move to 3 feet away from your fall detector

Simulate the fall of a body by dropping the 18 lbs jerry can from the top of the coping.

- The siren must go off less than 20 seconds after the fall.
- Stop the alarm by pressing the grey button on your remote control.

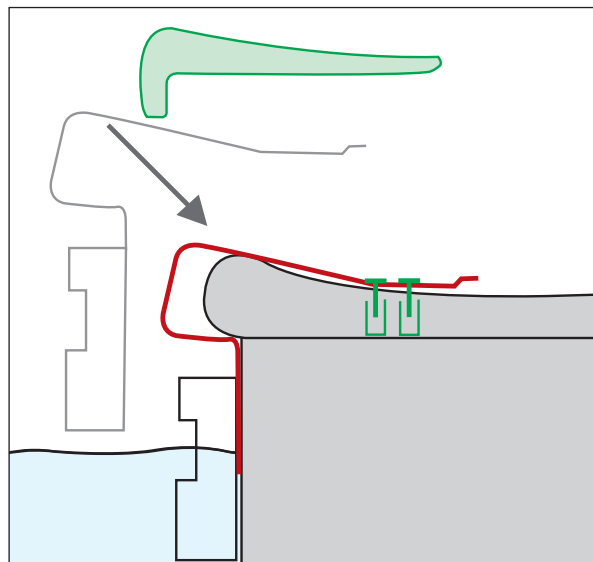
The test is validated.

If one of these tests fails:

- Look up § 9
- Contact your retailer
- Contact our technical support service: usa@sensor-esprio.com

All the tests have been conducted successfully, you may now proceed with the final installation of your device.

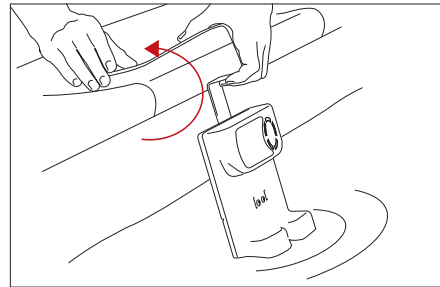
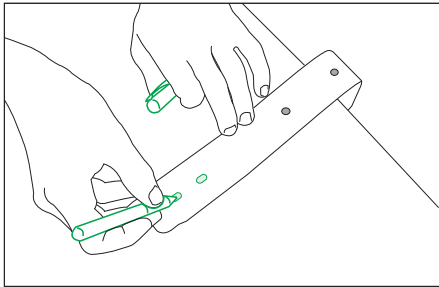
5.6 Existing pool: final attachment of Sensor Esprio™



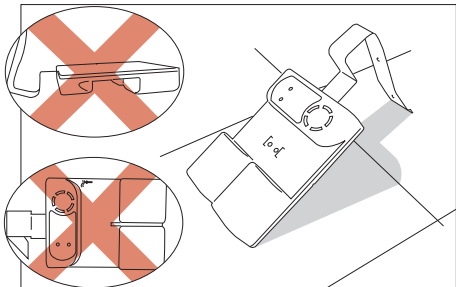
Sensor Esprio™ must imperatively be flat against the wall of the pool.

To make sure this is the case, you might have to put the attachment support slightly out of shape so that it fits snugly against the coping.

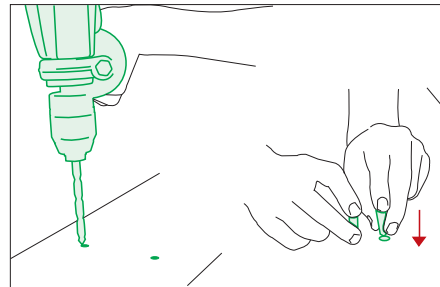
Put Sensor Esprio™ in “total shut-off” mode (see §7.6) so that it can be handled freely during its final installation.



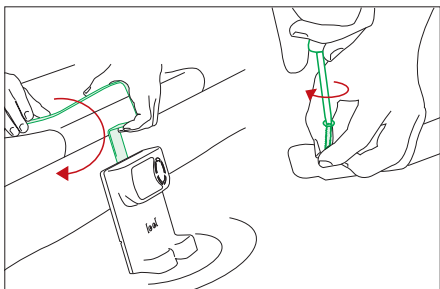
Make absolutely sure that Sensor Espio™ is vertical when handled, with the battery compartment down.



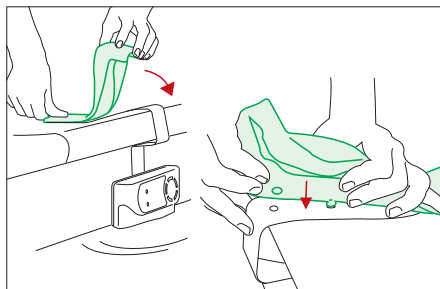
It is essential that Sensor Espio™ be handled and positioned as shown.



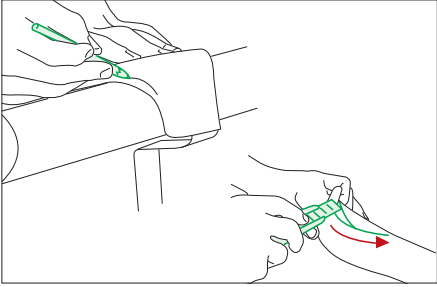
Drill the 2 holes with a Ø8mm bit and put in the two 2 rawplugs.



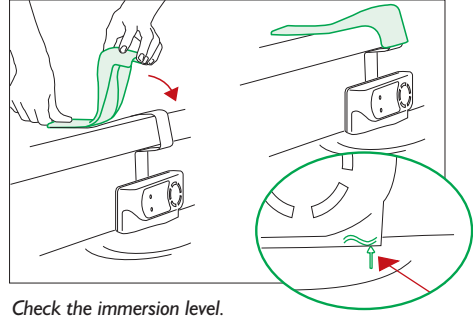
Clip the attachment support on the coping again. If there is a gap between the attachment support and the coping, put the wedging foam pad in it (cut it down to size if need be). Tighten the 2 screws.



Fit the protection for the attachment support.

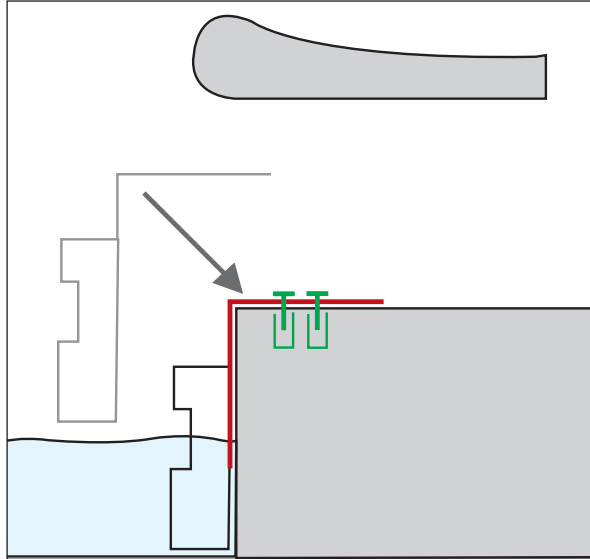


If need be, cut the protection down to size using a craft knife.



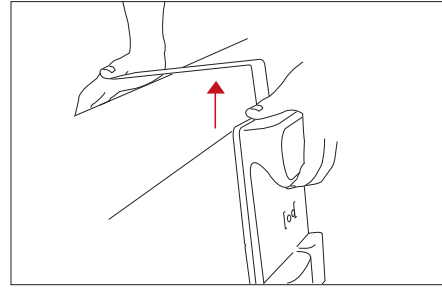
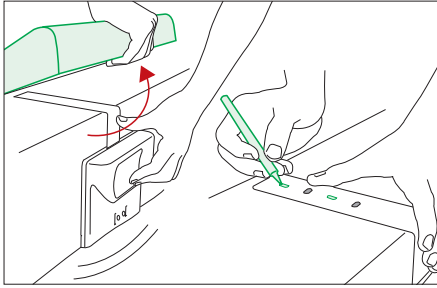
Check the immersion level.

5.7 Pool under construction: final attachment of Sensor Esprio™

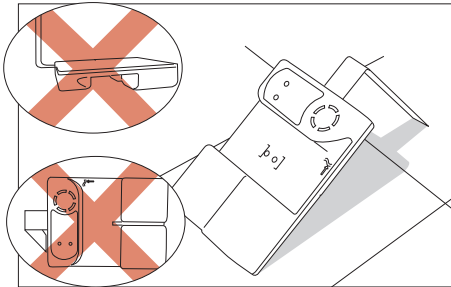


Fasten the attachment support as your pool is being built, and imperatively before the coping is laid.

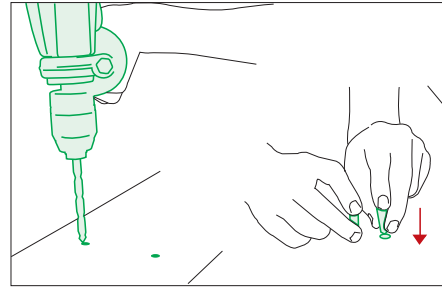
Sensor Esprio™ must imperatively be flat against the wall of the pool. To make sure this is the case, you might have to put the attachment support slightly out of shape.



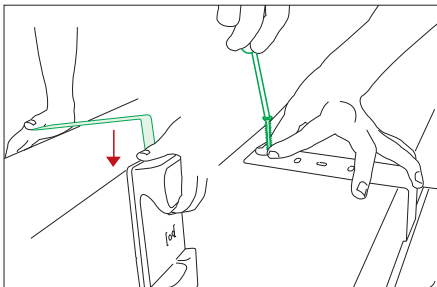
Make absolutely sure that Sensor Esprio™ is vertical when handled, with the battery



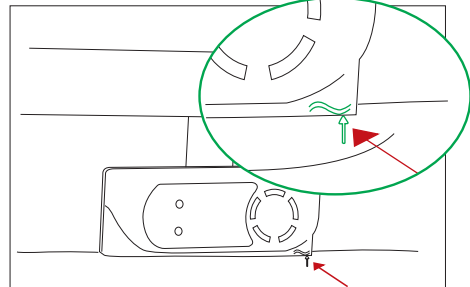
It is essential that Sensor Esprio™ be handled and positioned as shown.



Drill the 2 holes with a Ø8mm bit and put in the two 2 rawplugs.



Tighten the 2 screws and replace the coping.



Check the immersion level.